

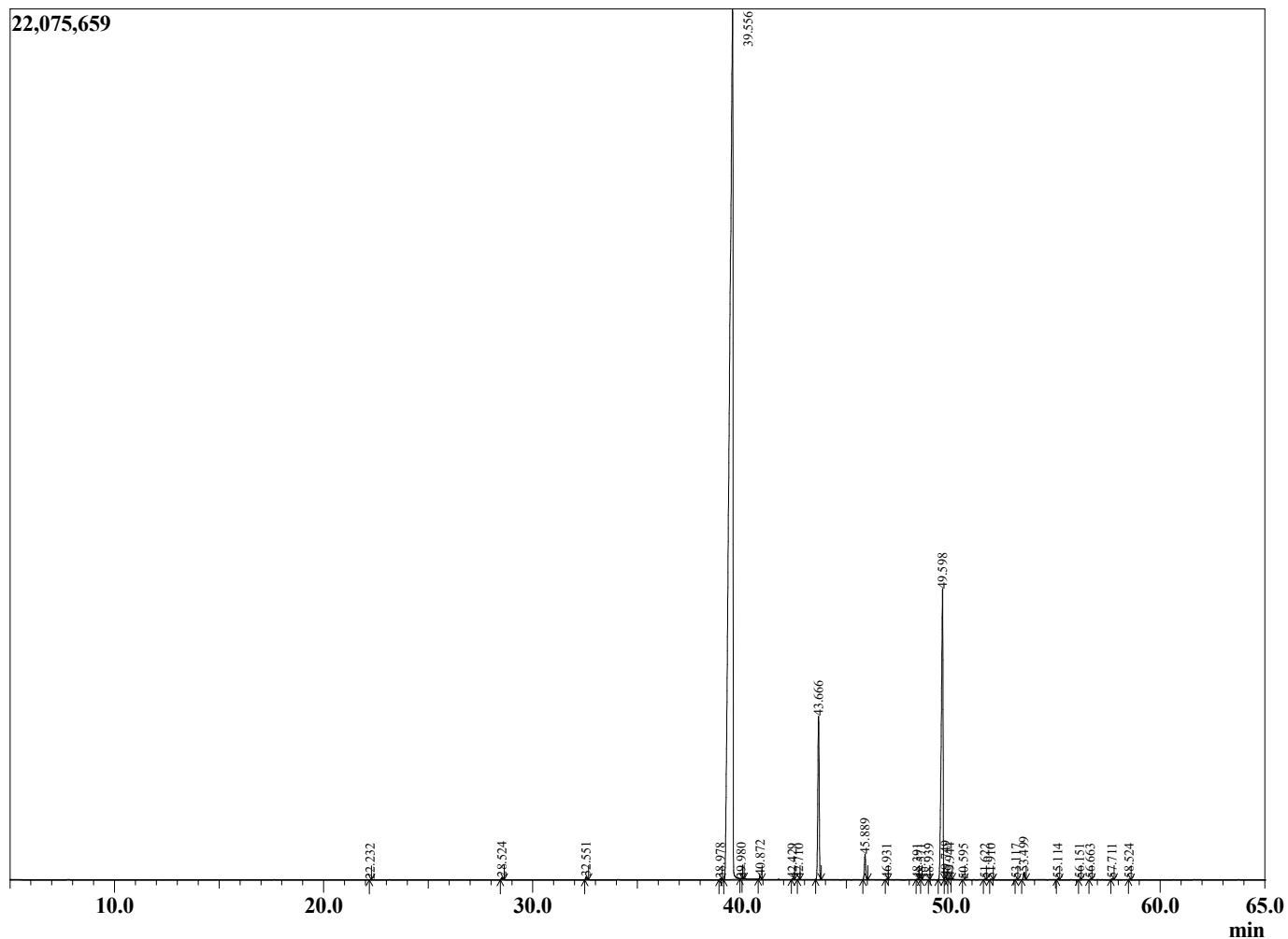
Sample Information

Sample Type : Essential Oil
 Sample Name : Eugenia caryophyllata
 Injection Volume : 0.10

Clove Bud
 Lot# MAE33 - EK
 Country: Madagascar



Chromatogram Eugenia caryophyllata



R.Time	Name	Area%
22.232	Linalool	0.01
28.524	Methyl salicylate	0.07
32.551	Chavicol	0.08
38.978	alpha-Cubebene	0.04
39.556	Eugenol	79.39
39.980	4-propyl-Guaiacol	0.01
40.872	alpha-Copaene	0.11
42.429	Methyleugenol	0.02
42.710	cis-beta-Caryophyllene	0.01
43.666	trans-beta-Caryophyllene	5.79
45.889	alpha-Humulene	0.87
46.931	cis-Cadina-1(6),4-diene	0.02
48.391	alpha-Selinene	0.02
48.571	alpha-Murolene	0.00
48.939	trans,trans-alpha-Farnesene	0.00
49.598	Eugenyl acetate	13.03
49.749	delta-Cadinene	0.11
49.944	cis-Calamenene	0.05
50.595	trans-Cadine-1,4-diene	0.01
51.622	Unidentified	0.02
51.910	Unidentified	0.02
53.117	Caryophyllene alcohol	0.01
53.499	Caryophyllene oxide	0.26
55.114	Humulene epoxide II	0.03
56.151	Epicubenol	0.01
56.663	Caryophylla-4(12),8(13)-dien-5-ol	0.01
57.711	Unidentified	0.02
58.524	Unidentified	0.01
		100.00